

# FIBREROLL

## TEXTILE ROLLER FIRE SHUTTER

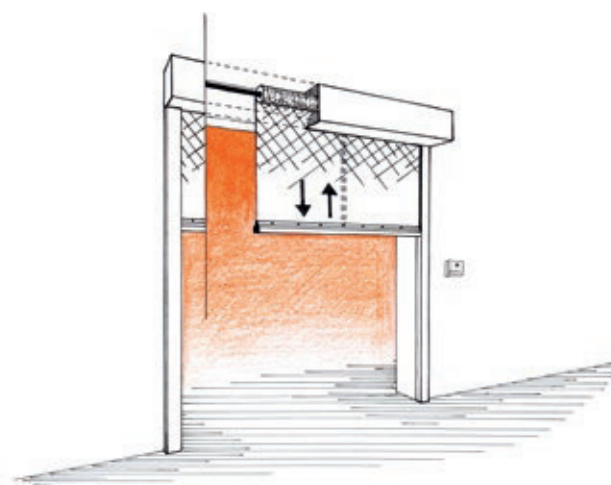
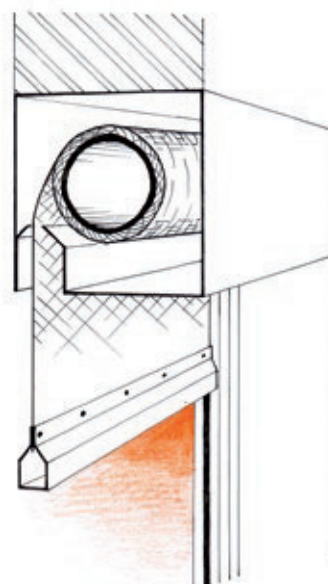
### FIRE RESISTANCE:

EW 15 to EW 180 or EI 180 when cooling with water



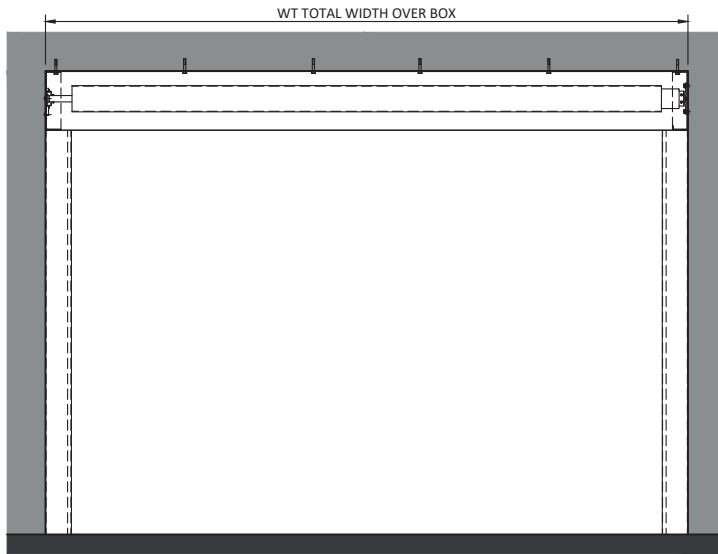
### DESCRIPTION OF THE PRODUCT

- › The shutter is made of a special fire resistant textile the warp of which is stainless steel wires filled with glass fibers provided with surface coating made of inorganic materials (approx. thickness 0.6 mm) or of special fire-resistant textile, the warp of which is stainless steel wires filled with glass fibers provided with one-sided surface coating and one-sided aluminum foil coating.
- › Maximum width 20 m, maximum height 6 m (larger dimensions possible after consultation).
- › The shutter is designed to be placed on an opening or into it (or combination of both variants, as the case may be, fixation to concrete, masonry or steel profiles with required fire resistance).
- › Standard dimension of winding shutter box is 230 × 200 mm (W × H) with clear height to 3 m, for dimensions from 3 m to 6 m the size of the box is 230 × 230 mm (W × H).
- › The shutter is controlled electrically by means of a tube drive (electric motor with gearbox) with gravitation start-up in case power supply is interrupted.
- › It allows automatic closing from the fire alarm system switchboard (potential-free contact), even in case the supply voltage by means of a back-up source or gravitation drops out.
- › Electronic control of individual functions of the shutter proceeds by means of a special AOP control unit (Avaps control panel), including control elements (buttons or key control).
- › Local autonomous fire sensors, optical and acoustic signaling can be supplied together with the shutter.
- › Textile shutters have a very low weight (shutter 3 × 3 m approx. 140 kg, shutter 6 × 6 m approx. 270 kg).
- › The speed of the shutter closing is approx. 100 mm/s.
- › Steel parts are made from galvanized metal, upon request option of coating using RAL sampler.

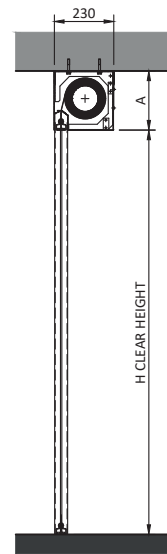


## TECHNICAL INFORMATION

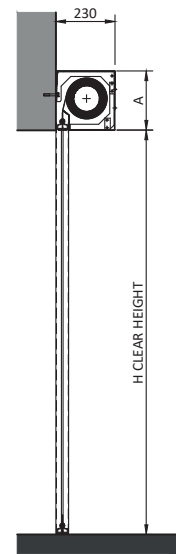
VIEW - FIXING INTO THE OPENING (FIXED BETWEEN)



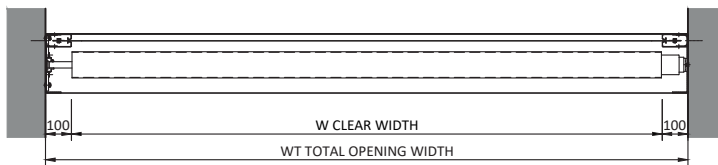
TYPICAL SECTION  
FIXED BETWEEN



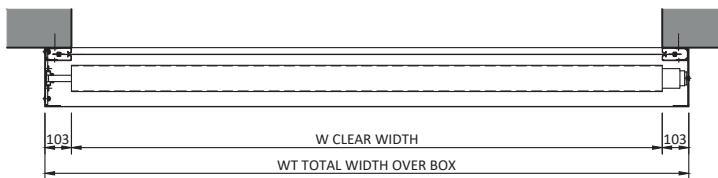
TYPICAL SECTION  
FACE FIXED



PLAN VIEW - FIXING INTO THE OPENING (FIXED BETWEEN)

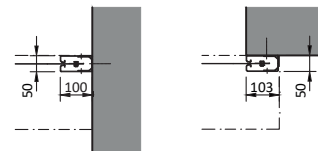


PLAN VIEW - FIXING ONTO THE OPENING (FACE FIXED)



A = 200 mm IF H ≤ 3000 mm  
A = 230 mm IF H > 3000 mm

SIDE GUIDE FIXING DETAIL  
FIXED BETWEEN      FACE FIXED



## MAINTENANCE AND REPAIR SERVICES

We provide professional warranty and post-warranty service and revisions according to applicable laws for all our products.

Contact: +351 220 933 194 / [info@statusedge.pt](mailto:info@statusedge.pt)

